

January 18, 2005, 10 to 12 am



## **Press Release on the Business Development of the MAHLE Group Fiscal Year 2004**

# Agenda



- 1. Business Environment/Economic Situation in the Automotive Industry**
- 2. Business Development in 2004**
- 3. Strategic Development of the Group**
- 4. Outlook for 2005**

# Worldwide Automotive Production

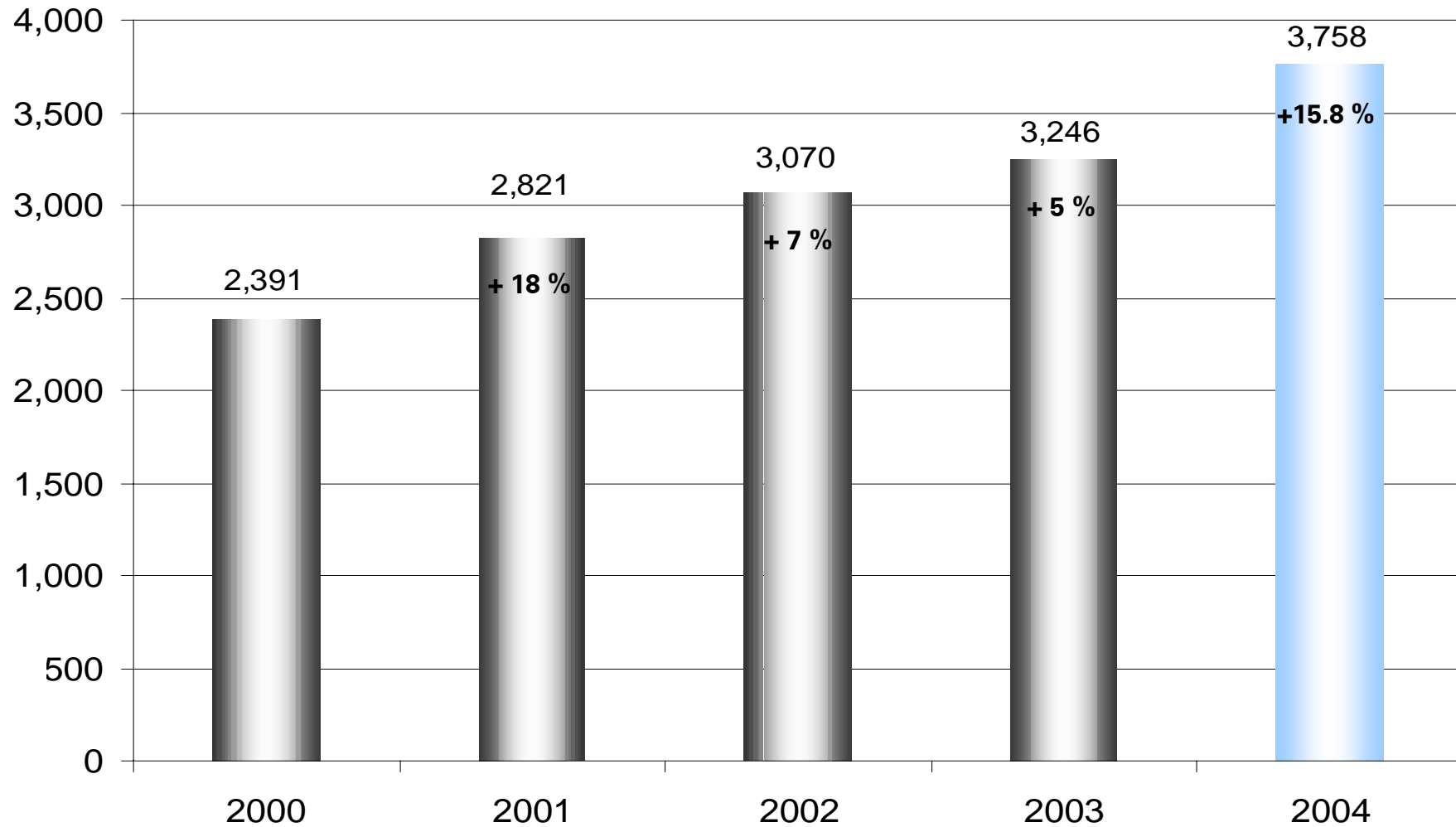
(Number in 1000s)



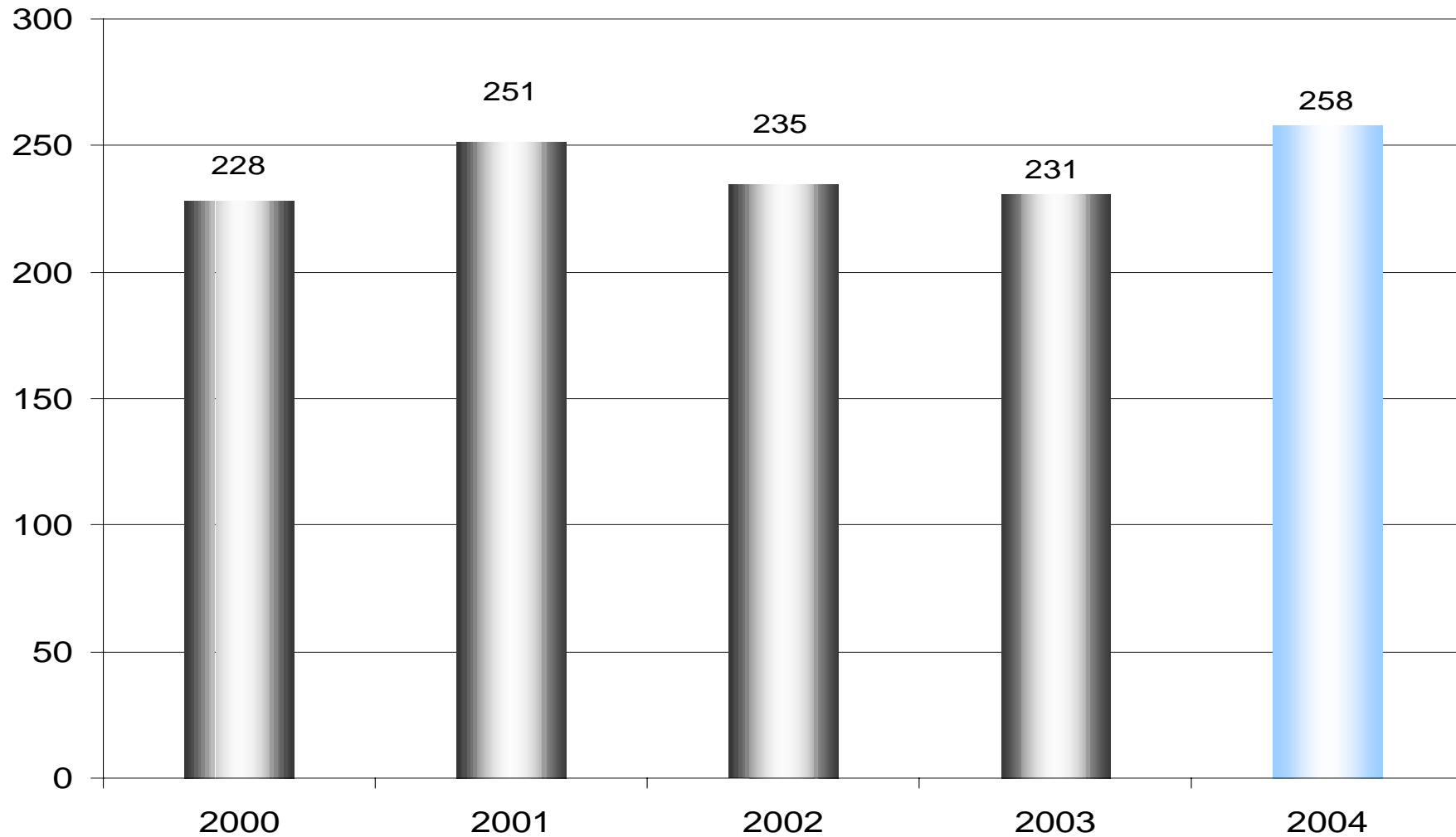
	2003 Pass. cars & LCV	2003 Comm. vehicles	2004 Pass. cars & LCV	2004 Comm. vehicles
<b>America</b>	<b>17,764</b>	<b>432</b>	<b>18,255</b>	<b>554</b>
- NAFTA	15,866	358	15,907	460
- South America	1,898	74	2,348	94
<b>Asia/Pacific</b>	<b>19,981</b>	<b>790</b>	<b>21,154</b>	<b>829</b>
- Japan	9,983	242	10,068	220
- China	3,949	395	4,451	425
<b>Europe</b>	<b>19,649</b>	<b>467</b>	<b>20,515</b>	<b>524</b>
- Germany	5,365	131	5,510	151
<b>Rest of World</b>	<b>1,150</b>	<b>0</b>	<b>1,332</b>	<b>0</b>
<b>Total</b>	<b>58,544</b>	<b>1,689</b>	<b>61,256</b>	<b>1,907</b>

Source: Global Insight Automotive World Car Industry Report (passenger cars and light commercial vehicles (< 6t))

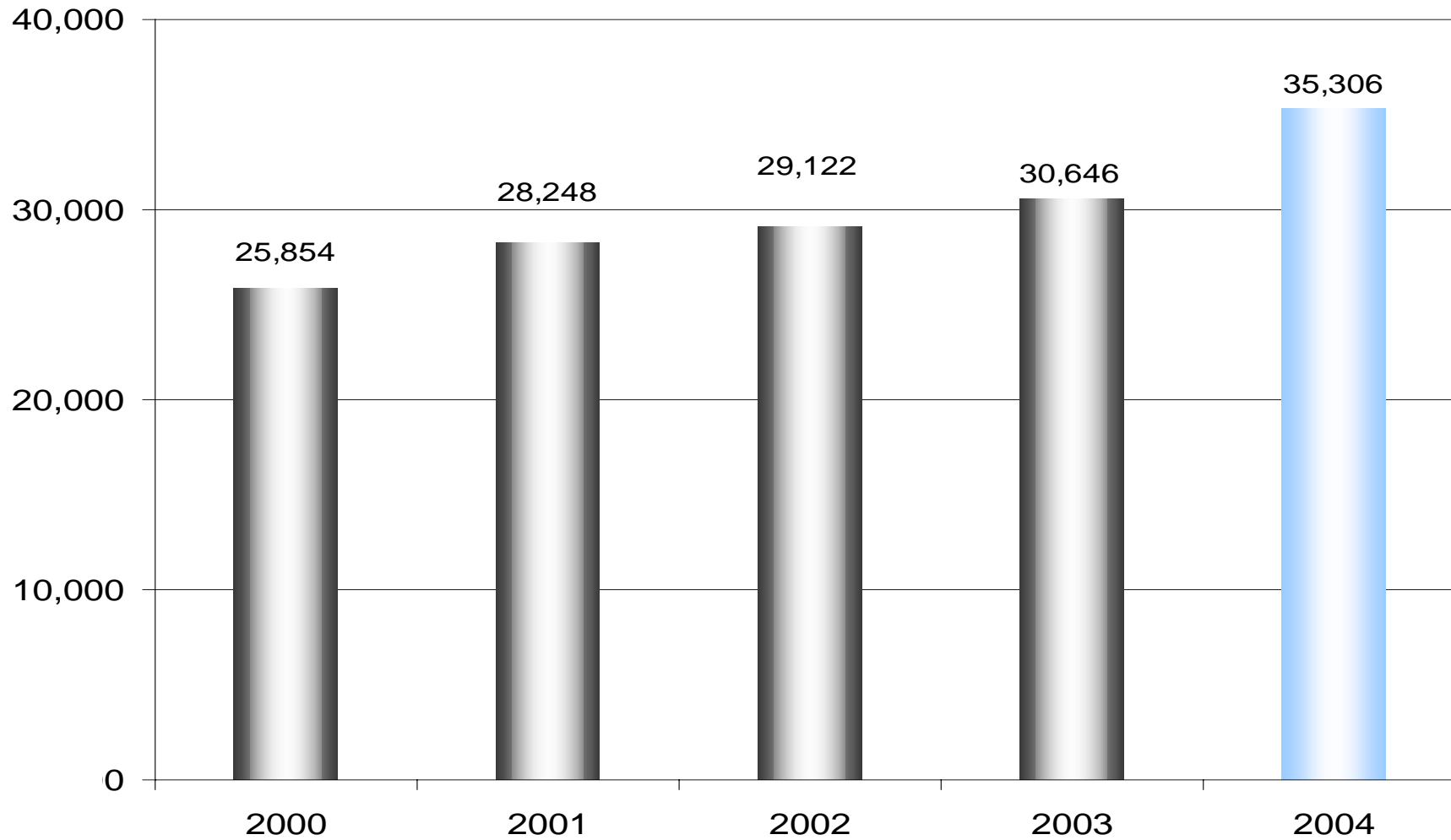
MAHLE Group  
Sales Development  
in million euros



MAHLE Group  
Development of Investments in Fixed Assets  
in million euros



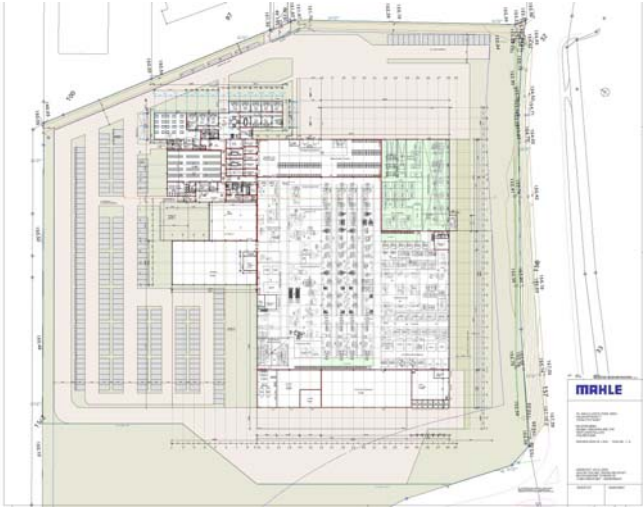
# MAHLE Group Development of Headcounts



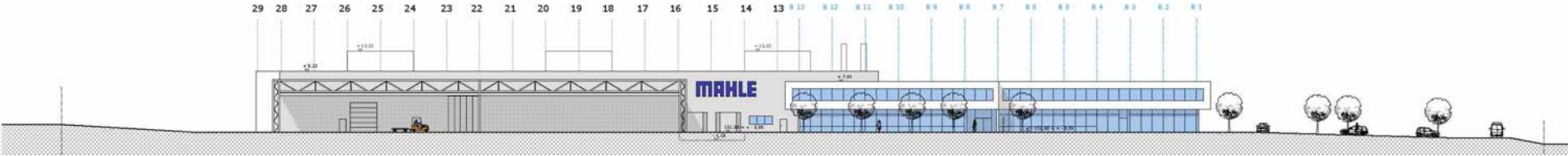
MAHLE Ventiltrieb Brandenburg GmbH  
in Wustermark/Germany



# MAHLE Ventiltrieb GmbH in Wölfersheim/Germany



ansicht nordost



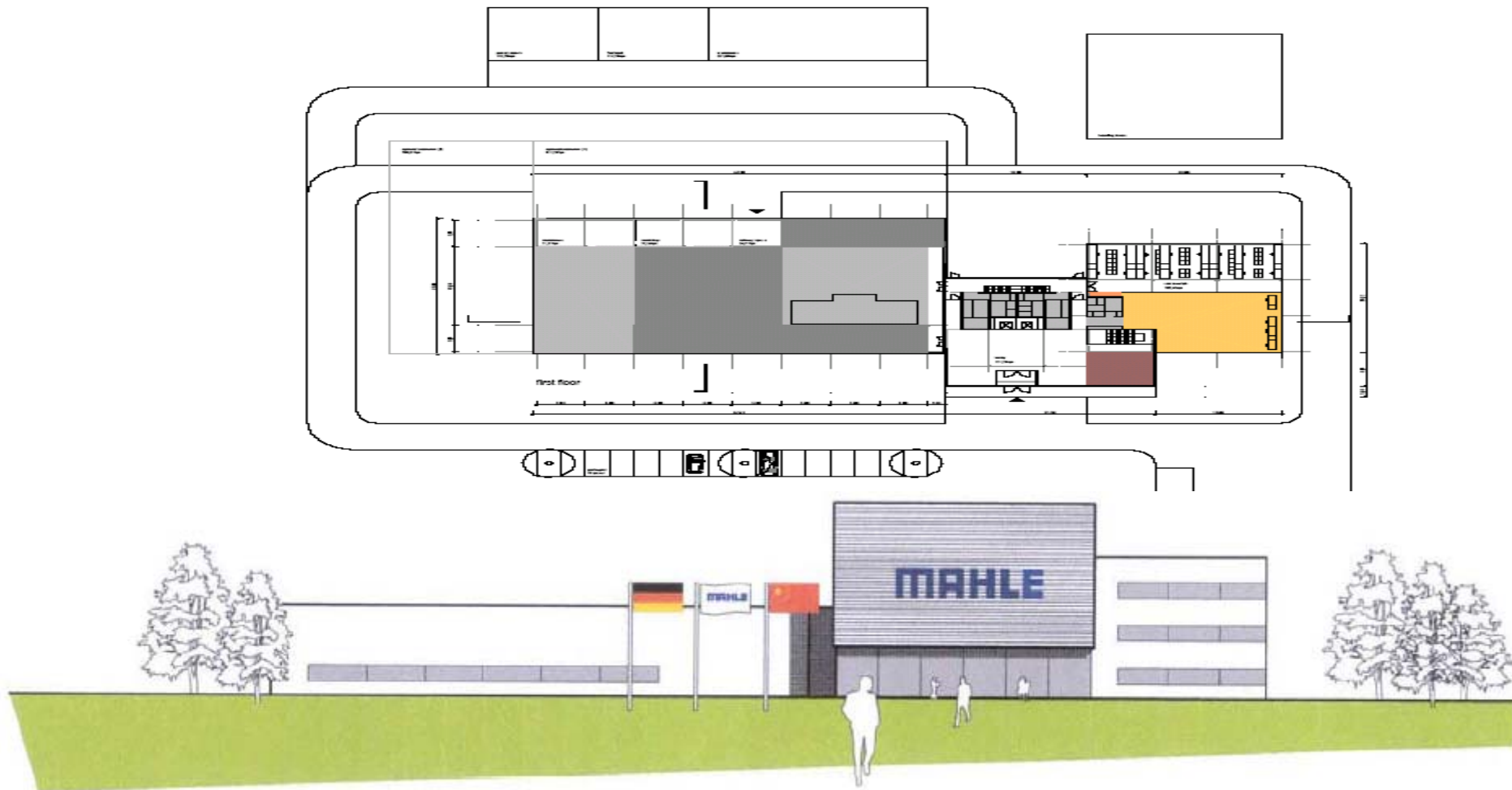
MAHLE Engine Components Australia Pty Ltd.



# MAHLE Bearings (Yingkou) Co., Ltd. in China



# MAHLE Research and Development Center in Shanghai/China



**Thank you for your attention!**

MAHLE International GmbH  
Birgit Albrecht  
Corporate Communications/Public Relations  
Pragstraße 26-46  
D-70376 Stuttgart

Phone.: +49 (0)7 11/5 01-25 06  
Fax: +49 (0)7 11/5 01-37 00  
E-mail: [birgit.albrecht@mahle.com](mailto:birgit.albrecht@mahle.com)